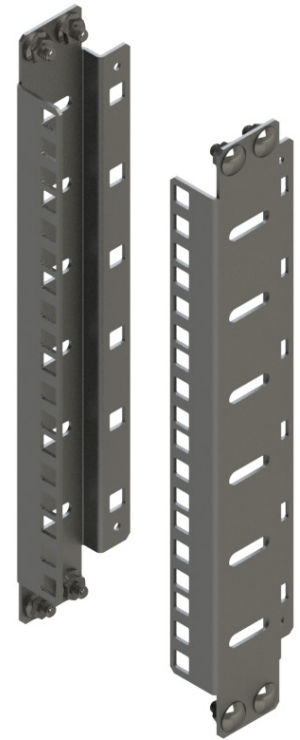


Our Standard Wall Mount Rack Rail Kit. Fits all sizes of the Cube Series. Replace existing rails or add an extra pair in the back for extra equipment support. Rail includes integrated grounding. Easy to replace/install via carriage bolt and nut. Marked rails for equipment organization.



Features

- Fits Cube Wall Mount Series
- For replacements or extra support
- Integrated grounding stud
- RMU marked for easy installs
- Available in either Square Punch or Threaded 12-24
 - * For square punched cage nuts sold separately

ORDERING INFORMATION					
4 4 9 9 -	Color	Rack Units	Cabinet Overall Height	Rail Style	
WH	White	12	24"	T	12-24 Tapped
BK	Black	18	34.5"	S	3/8 Square
GR	Grey	25	46.75		

Included

- (2) Cube Wall Mount Rails
- (1) Hardware Kit
 - (8) 1/4"-20 Bolts
 - (8) 1/4"-20 Nuts

SPECIFICATIONS

Description	Cube Wall Mount Rail Kit		
Use	Indoor Use Only		
Available Sizes	• Rack Units:	12U / 18U / 25U	
	• Rail Style:	#12-24 Tapped Rails / 3/8" Square Punched Rails	
Material	14GA Steel		
Construction	Formed Sheet Metal Rails		
Finish	Powder Coated Paint		