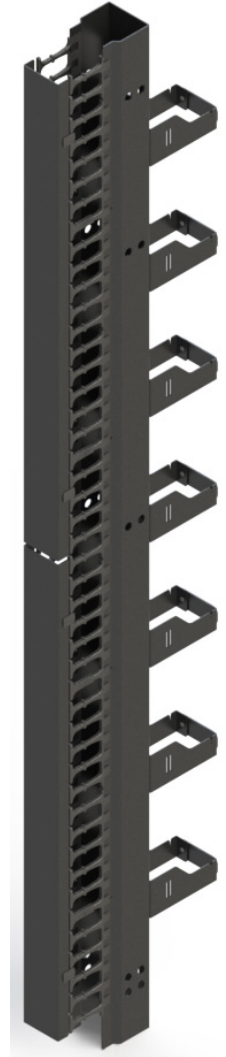


The E Series cable managers the most versatile cable manager. You can order it in a single sided, and then add the rear rings to create a combo manager or you can purchase 2 singles and bolt them back to back to create a double sided manager. The Front Covers are split so you can access either top or bottom. Bolts to most all 2 and 4 post racks.



ORDERING INFORMATION

| 3520- | Color | | Height (RU) | | Width | | Plastic Fingers | | Door Style | |
|-------|-------|-------|-------------|----------|-------|------------|-----------------|---------------|------------|---------|
| | WH | White | 70 | 7' (45U) | 04 | 4" Trough | S | Short Fingers | F | Flat |
| | BK | Black | 80 | 8' (51U) | 06 | 6" Trough | L | Long Fingers | C | Channel |
| | GR | Grey | | | 08 | 8" Trough | | | | |
| | | | | | 10 | 10" Trough | | | | |
| | | | | | 12 | 12" Trough | | | | |

Included

- (1) Combo E-Series Manager with Cable Fingers
- (2) Cable Manager Doors
- (Varies with Height) Cable Rings
- (1) Hardware Kit

SPECIFICATIONS

| | | | |
|-----------------|---|--------------------------|------------------------|
| Description | Combo E-Series Cable Manager | | |
| Use | Indoor Use Only | | |
| Available Sizes | | Overall Size | Usable Rack Unit Space |
| | • Height: | 7' / 8' | 45U / 51U |
| | • Width: | 4" / 6" / 8" / 10" / 12" | |
| Material | 12GA Aluminum, Plastic Cable Fingers | | |
| Construction | Formed Channel Body, Formed Cable Rings, Formed Channel Doors with Plastic Hinges | | |
| Finish | Powder Coat Paint | | |