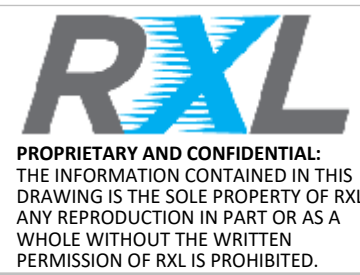
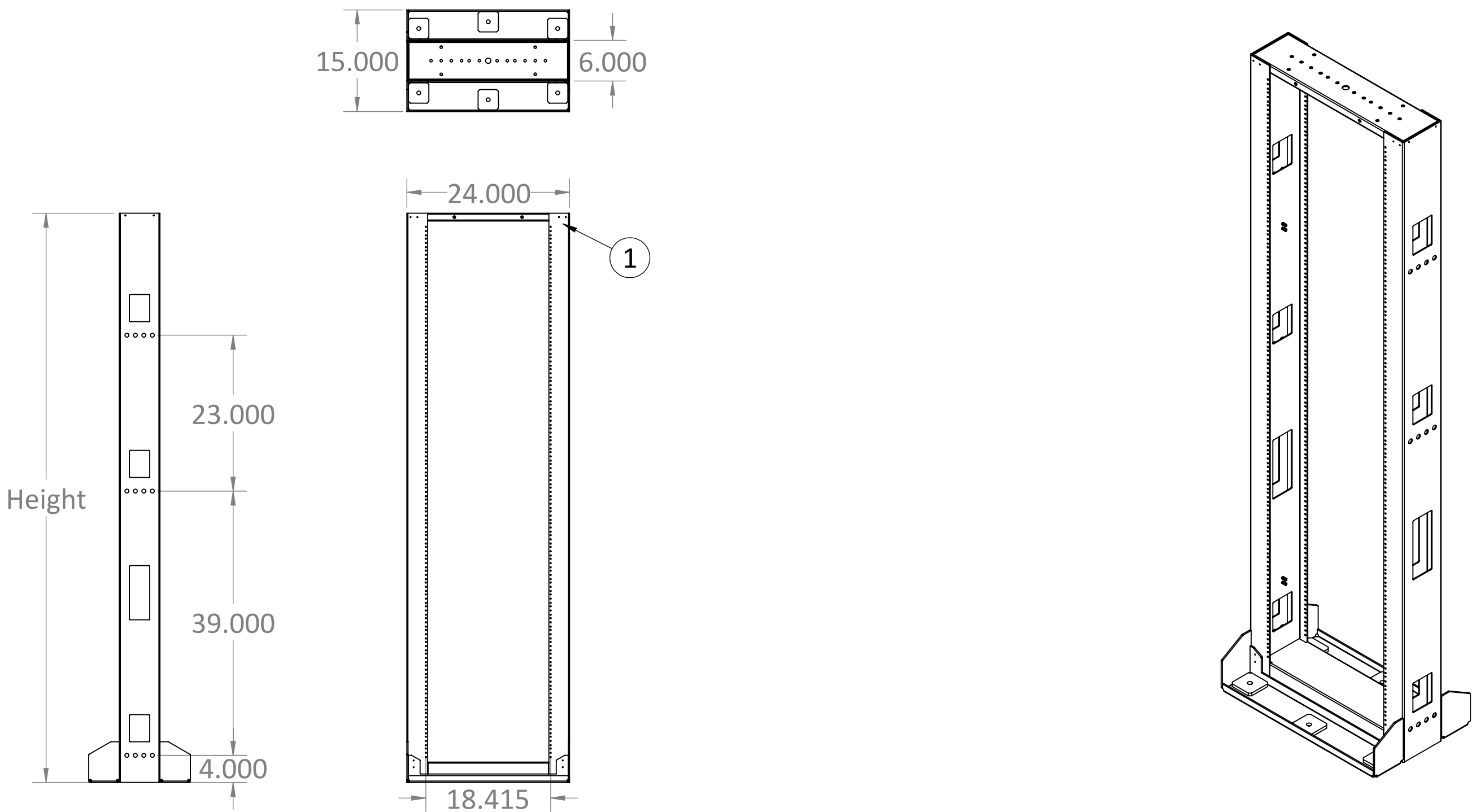


ITEM #	PART NUMBER	CONFIGURATION	REV	DESCRIPTION	MATERIAL	QTY
1	WD-2822-03	X7019	C	7ft. H x 19EIA W Heavy Duty Double Sided Seismic 2Post Rack Weldment		1



SERIES/FAMILY NUMBER: RXL-2822		CONFIGURATION (SEE TABLE DETAILS/"X" DENOTES COLOR): X7019		COMMENTS/FOLDER PATH: B:\RXL Inc\RXL Engineering - General\RXL\Section 2 - Open Racks\RXL-2822 Heavy Duty Double Sided Seismic 2Post Rack\	
DESCRIPTION: 7ft. H x 19EIA W Heavy Duty Double Sided Seismic 2Post Rack				UNLESS OTHERWISE SPECIFIED: DIMENSIONS ARE IN INCHES TOLERANCES: ±0.03 FRACTIONAL: ±1/32 ANGULAR: ±1° TWO PLACE DECIMAL ±0.03 THREE PLACE DECIMAL ±0.030	
REVISION C	DATE 7/12/2022	REVISION DESCRIPTION: Changed dimensions to all fit 11GA with 7GA Base.		MATERIAL:	FULL PART NUMBER: RXL-2822-X7019
				FINISH: PAINT	DRAWN BY: Jackson Chong
				WEIGHT: 150.87lbs.	DRAWN DATE: 2/25/2020
				SURFACE AREA: 8586.86in.²	DO NOT SCALE DRAWING Scale: 1:4
				DRAWING SIZE: B SHEET 1 OF 1	

8 7 6 5 4 3 2 1