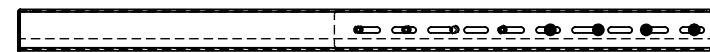
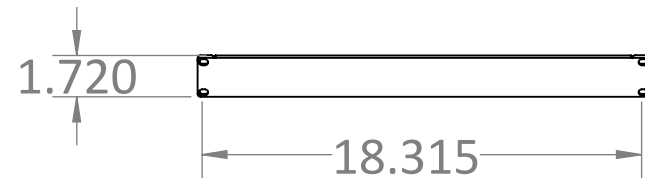
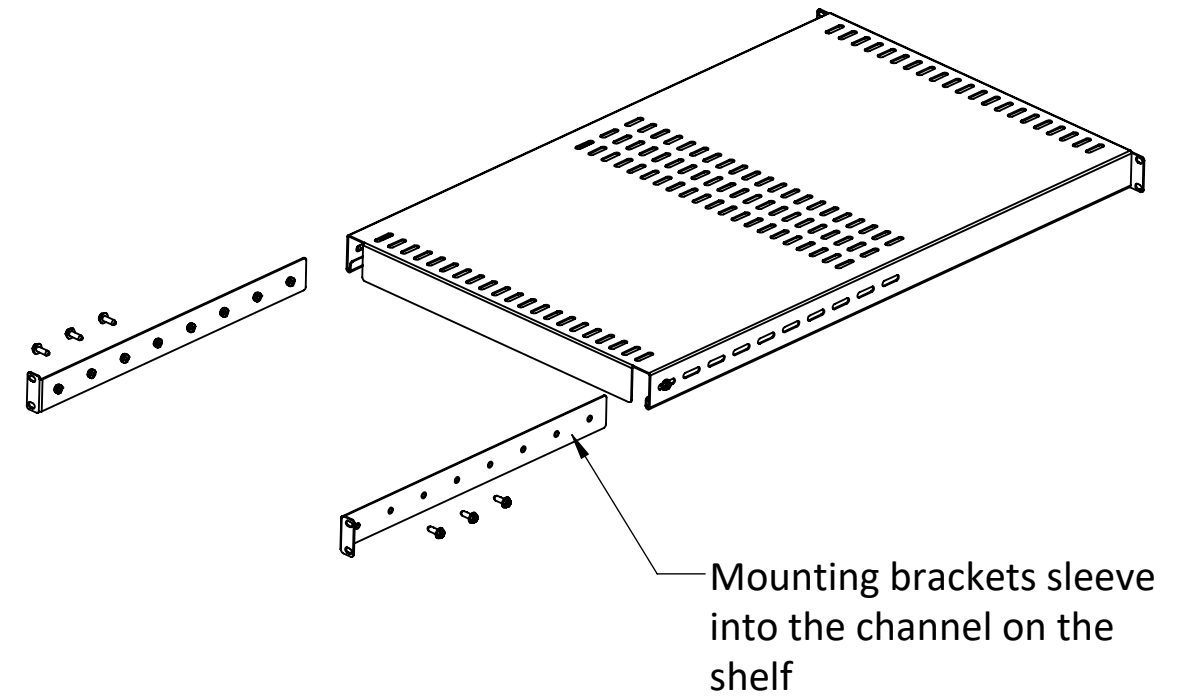
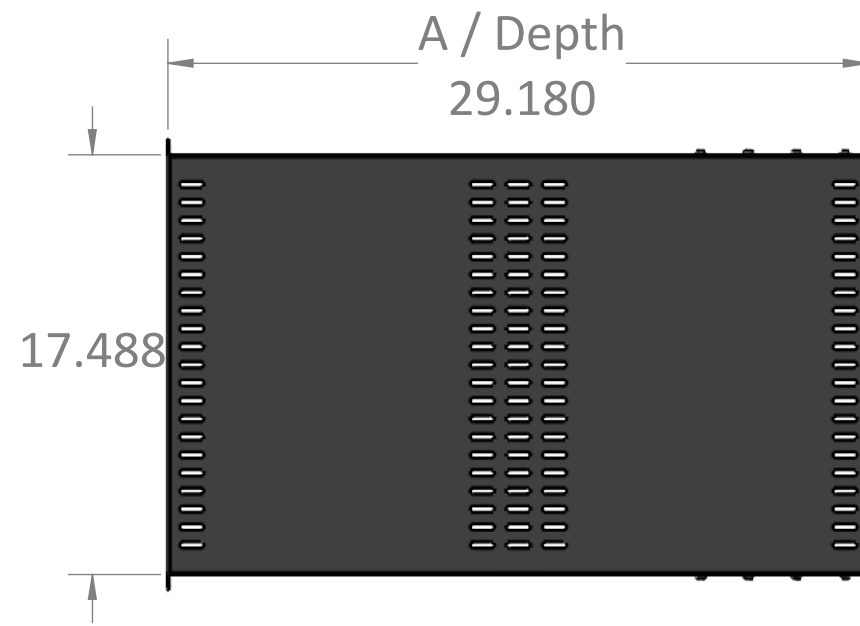


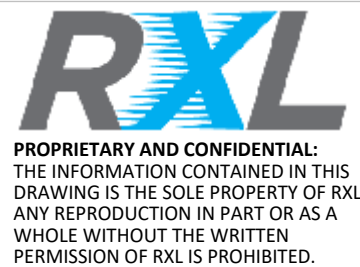
ITEM #	PART NUMBER	CONFIGURATION	REV	DESCRIPTION	MATERIAL	QTY
1	AS-2451-02	X29	A	4Post Adjustable Shelf Assembly		1

Configuration	
DIM A	DEPTH
24	24.180
29	29.180
36	36.180

Note: Substitute "X" with Color codes
 WH=White, BK=Black, GR=Grey



Specification:
Material thickness: 16ga mild steel
Finish: Electro static powder coat
Load capacity: 100lbs
Fasteners: (14) 12-24 Mounting Screws



SERIES/FAMILY NUMBER: RXL-2451		CONFIGURATION (SEE TABLE DETAILS/"X" DENOTES COLOR): X29
DESCRIPTION: RXL-2451 4Post Adjustable Shelf		
REVISION A	DATE 8/20/2019	REVISION DESCRIPTION: Initial

COMMENTS/FOLDER PATH: D:\RXL Inc\RXL - Engineering - Section 2 - Open Racks\RXL-2451 Adjustable 4Post Rack Shelf\
UNLESS OTHERWISE SPECIFIED: DIMENSIONS ARE IN INCHES TOLERANCES: ±0.03 FRACTIONAL: ±1/32 ANGULAR: ±1° TWO PLACE DECIMAL ±0.03 THREE PLACE DECIMAL ±0.030

MATERIAL:	FULL PART NUMBER: RXL-2451-X29
FINISH: PAINT	DRAWN BY: Jackson Chong DRAWN DATE: 10/20/2021
WEIGHT: 12.14lbs.	SURFACE AREA: 1468.22in. ²
DO NOT SCALE DRAWING Scale: 1:4	DRAWING SIZE: B SHEET 1 OF 1