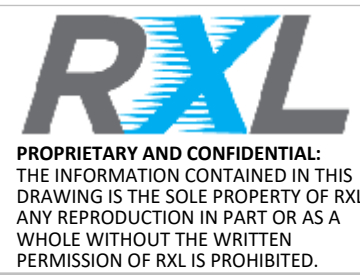
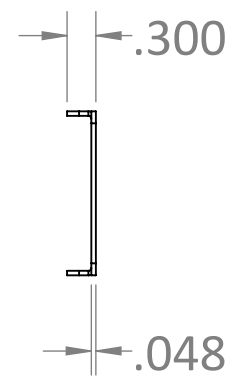
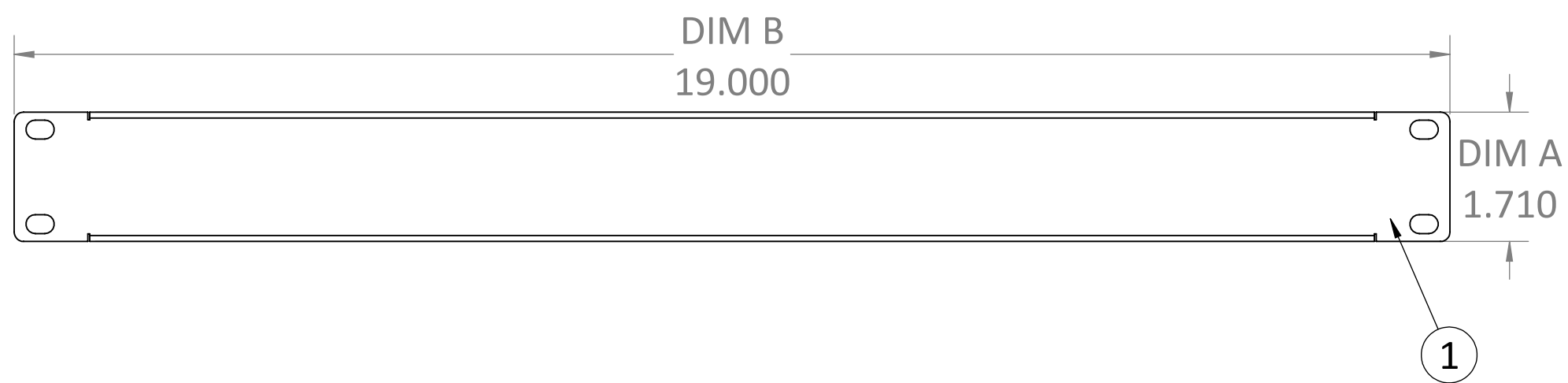
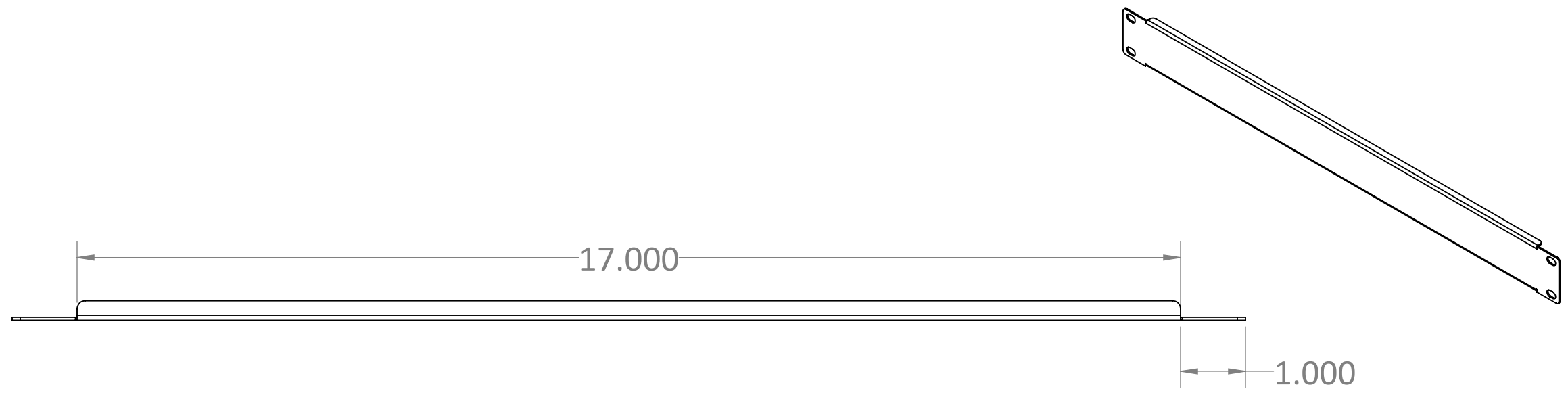


8 7 6 5 4 3 2 1

ITEM #	PART NUMBER	CONFIGURATION	REV	DESCRIPTION	MATERIAL	QTY
1	PT-2029-01	X0119	A	1U, 1.71in. H x 19in. W Flanged Blanking Panel	18GA STEEL(0.0478)	1

Configuration			
DIM A	LENGTH	DIM B	LENGTH
01	1.71	19	19
02	3.46	23	23
03	5.21		
04	6.96		
12	20.96		



SERIES/FAMILY NUMBER: RXL-2029		CONFIGURATION (SEE TABLE DETAILS/"X" DENOTES COLOR): X0119		COMMENTS/FOLDER PATH: B:\RXL Inc\RXL Engineering - General\RXL\Section 2 - Open Racks\RXL-2029 Flanged Blanking Panel\	
DESCRIPTION: 01U x 19in. W Flanged Blanking Panel				UNLESS OTHERWISE SPECIFIED: DIMENSIONS ARE IN INCHES TOLERANCES: ±0.03 FRACTIONAL: ±1/32 ANGULAR: ±1° TWO PLACE DECIMAL ±0.03 THREE PLACE DECIMAL ±0.030	
REVISION A	DATE 4/8/2020	REVISION DESCRIPTION: Initial		MATERIAL: 18GA STEEL(0.0478)	FULL PART NUMBER: RXL-2029-X0119
			FINISH: PAINT	DRAWN BY: Jackson Chong	
			WEIGHT: 0.54lbs.	SURFACE AREA: 82.08in.²	DRAWN DATE: 4/8/2020
			DO NOT SCALE DRAWING Scale: 1:4		
			DRAWING SIZE: B SHEET 1 OF 1		

8 7 6 5 4 3 2 1