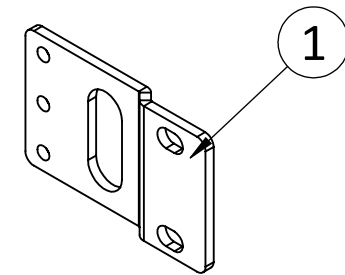
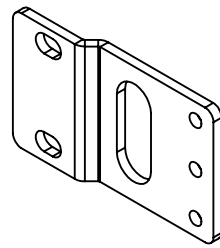


8 7 6 5 4 3 2 1

ITEM #	PART NUMBER	CONFIGURATION	REV	DESCRIPTION	MATERIAL	QTY
1	AS-2014-01	X01P	B	Rack Adapters		1



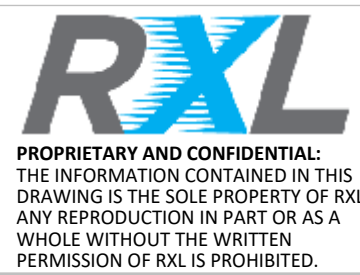
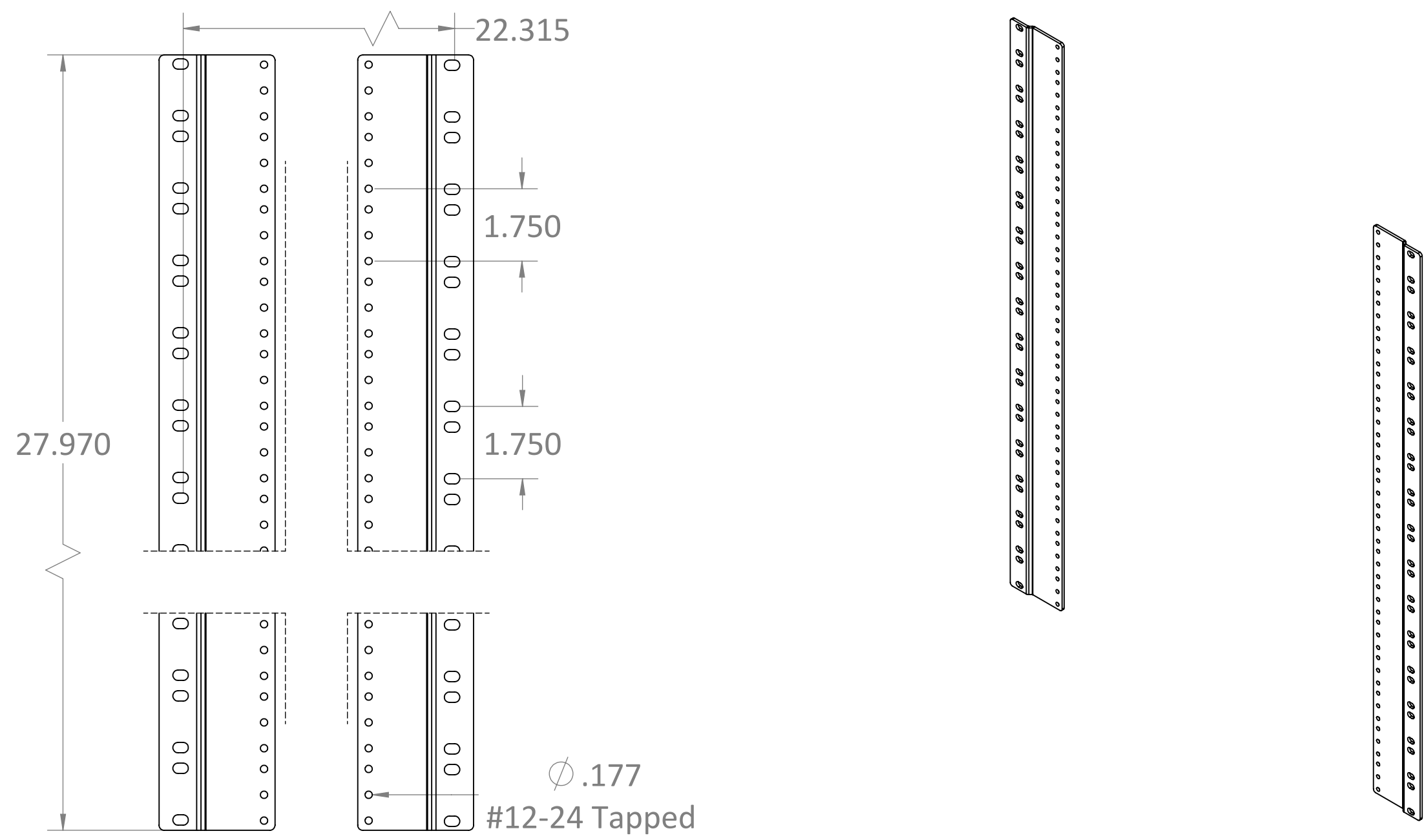
RXL
 PROPRIETARY AND CONFIDENTIAL:
 THE INFORMATION CONTAINED IN THIS
 DRAWING IS THE SOLE PROPERTY OF RXL.
 ANY REPRODUCTION IN PART OR AS A
 WHOLE WITHOUT THE WRITTEN
 PERMISSION OF RXL IS PROHIBITED.

SERIES/FAMILY NUMBER: RXL-2014		CONFIGURATION (SEE TABLE DETAILS/"X" DENOTES COLOR): X01P
DESCRIPTION: 01U Tapped Rack Adaptors, with Slots		
REVISION B	DATE 7/14/2022	REVISION DESCRIPTION: Shortened Mounting Flange

COMMENTS/FOLDER PATH: B:\RXL Inc\RXL Engineering - General\RXL\Section 2 - Open Racks\RXL-2014 23 to 19 Rack Adapters\		UNLESS OTHERWISE SPECIFIED: DIMENSIONS ARE IN INCHES TOLERANCES: ±0.03 FRACTIONAL: ±1/32 ANGULAR: ±1° TWO PLACE DECIMAL ±0.03 THREE PLACE DECIMAL ±0.030		MATERIAL: FINISH: PAINT WEIGHT: 0.28lbs.	SURFACE AREA: 20.16in.²	FULL PART NUMBER: RXL-2014-X01P DRAWN BY: Jackson Chong DRAWN DATE: 4/9/2020 DO NOT SCALE DRAWING Scale: 1:4	DRAWING SIZE: B SHEET 1 OF 2
---	--	--	--	--	--	--	--

8 7 6 5 4 3 2 1

ITEM #	PART NUMBER	CONFIGURATION	REV	DESCRIPTION	MATERIAL	QTY
1	AS-2014-01	X16S	B	Rack Adapters		1



SERIES/FAMILY NUMBER: RXL-2014		CONFIGURATION (SEE TABLE DETAILS/"X" DENOTES COLOR): X16S		COMMENTS/FOLDER PATH: B:\RXL Inc\RXL Engineering - General\RXL\Section 2 - Open Racks\RXL-2014 23 to 19 Rack Adapters\	
DESCRIPTION: 16U Tapped Rack Adaptors, Solid				UNLESS OTHERWISE SPECIFIED: DIMENSIONS ARE IN INCHES TOLERANCES: ±0.03 FRACTIONAL: ±1/32 ANGULAR: ±1° TWO PLACE DECIMAL ±0.03 THREE PLACE DECIMAL ±0.030	
REVISION B	DATE 7/14/2022	REVISION DESCRIPTION: Shortened Mounting Flange		MATERIAL: PAIN	FULL PART NUMBER: RXL-2014-X16S
				WEIGHT: 5.14lbs.	SURFACE AREA: 333.73in.²
				DO NOT SCALE DRAWING Scale: 1:4	DRAWING SIZE: B SHEET 2 OF 2