

Ladder style cable runway for communication cabling pathways. Mounts to ceilings, walls, floors, relay racks, and enclosures. Acceptable for communication and power pathways. UL File: E475767

Finishes: Powder Coat only

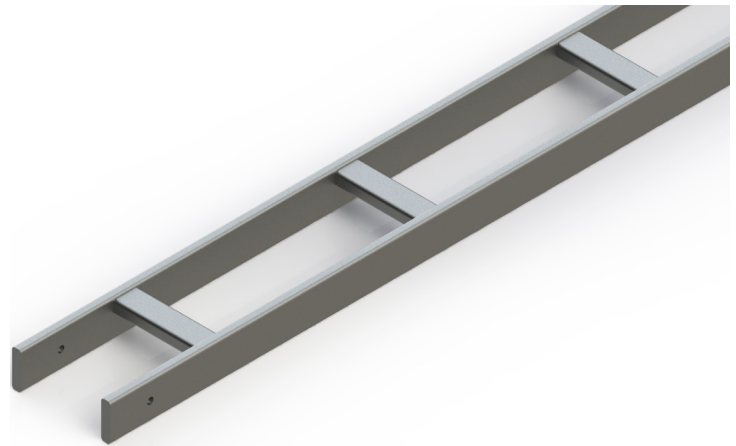
Stringer is 16ga, (3/8"x1-1/2") ASTM A513 Grade 1008 steel tube

Rung is 16ga, (3/8"x1-1/2") ASTM A513 Grade 1008 steel tube

Welded construction with 12" spacing on rungs.

**Holes on the ends of stringers for use with (1099) Grounding splice kit.

ORDERING INFORMATION			
1 0 5 0 -	Color	Width	Runway Width
	WH White	04	4
	BK Black	06	6
	GR Grey	09	9
		12	12
		15	15
		18	18
		24	24
		30	30



SPECIFICATIONS

Description	Tubular (Universal) Stringer Cable Runway (1-1/2")
Use	Indoor Use Only
Material	16GA ASTM A513 Grade 1008 Steel
Construction	Welded, underside of rungs
Finish	Powder Coated Paint