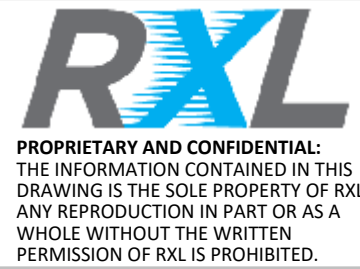
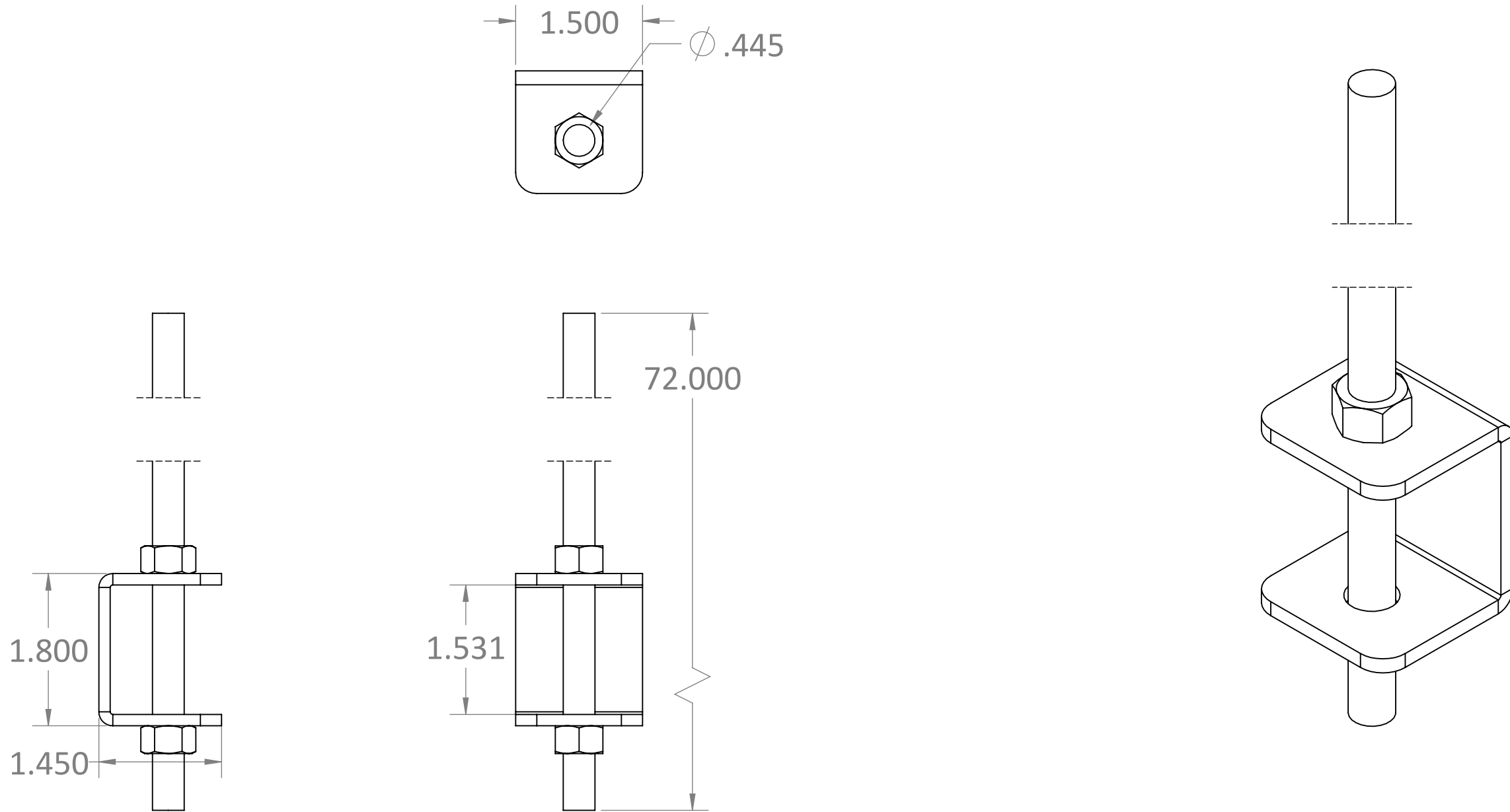


ITEM #	PART NUMBER	CONFIGURATION	DESCRIPTION	MATERIAL	QTY
1	PT-1018-01	X138	1.5W X 1.45D X 1.8H C BRACKET FOR 0.375 Thread	10GA STEEL(0.1345)	1
2	PT-1088-01	X0638	0.375in. Diameter, 3/8-16 Threaded Rod	Steel	1
3	NUT-HH	3816-X	Steel Hex Nut, 3/8"-16 Thread, 0.3281in. H	PURCHASE PART	2



SERIES/FAMILY NUMBER: RXL-1018		CONFIGURATION (SEE TABLE DETAILS/"X" DENOTES COLOR): X138		COMMENTS/FOLDER PATH: B:\RXL Inc\RXL Engineering - General\RXL\Section 1 - Cable Pathways\RXL-1018 Runway Supports\	
DESCRIPTION: RXL-1018 Runway Supports				UNLESS OTHERWISE SPECIFIED: DIMENSIONS ARE IN INCHES TOLERANCES: ±0.03 FRACTIONAL: ±1/32 ANGULAR: ±1° TWO PLACE DECIMAL ±0.03 THREE PLACE DECIMAL ±0.030	
REVISION A	DATE 3/12/2020	REVISION DESCRIPTION: Initial		MATERIAL: FINISH: PAINT WEIGHT: 2.51lbs.	FULL PART NUMBER: RXL-1018-X138 DRAWN BY: Jackson Chong DRAWN DATE: 3/12/2020 DO NOT SCALE DRAWING Scale: 1:4 DRAWING SIZE: B SHEET 1 OF 1