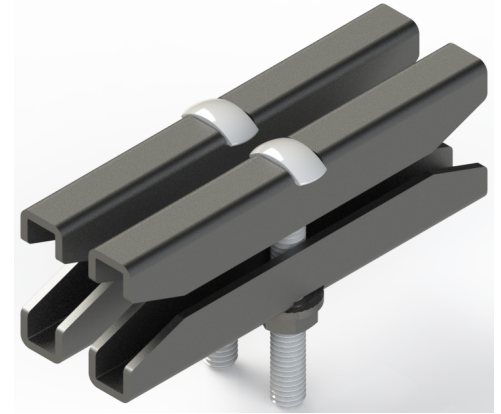


The Butt Splice Kit is used to connect two sections of Cable Runway. Finish is black chem film over zinc plating.



ORDERING INFORMATION							
1	0	1	0	-	Color	Height	Stringer Height
		BZ			Black Zinc	01	1.5"
		GZ			Gold Zinc	02	2"

Included

- (2) Butt Splice Clamps, Pair
- (1) Hardware Kit
 - (1) 3/8"-16 Bolt
 - (1) 3/8"-16 Nut

SPECIFICATIONS

Description	Butt Splice Kit
Use	Indoor Use Only
Material	12GA Steel
Construction	Formed Sheet Metal
Finish	Zinc Plating