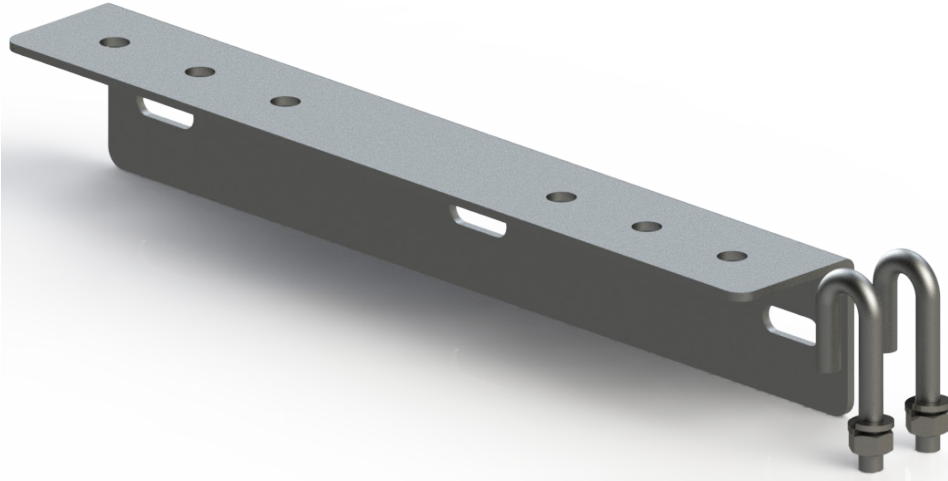


Steel angle support is designed for wall-mounting cable runway for a range of widths.



ORDERING INFORMATION				
1	0	0	8	-
			Color	Width
			Runway Width	
	WH	White	12	12"
	BK	Black	18	18"
	GR	Grey	24	24"
			30	30"

Included

- (1) Wall Angle Bracket
- (1) Hardware Kit
 - (2) J-Bolts
 - (2) 5/16"-18 Split Washer
 - (2) 5/16"-18 Nut

SPECIFICATIONS

Description	Wall Angle Kit with J-Bolts		
Use	Indoor Use Only		
Available Sizes	• Runway Width:	12" / 18" / 24" / 30"	
Material	11GA Steel		
Construction	Formed Sheet Metal		
Finish	Powder Coated Paint		