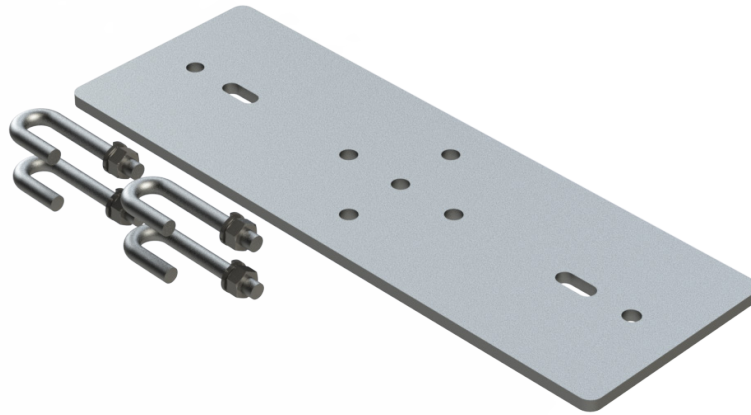


Secures cable runway to the top of 2 Post racks. These can mount parallel or perpendicular to the top angles.



ORDERING INFORMATION				
1	0	0	5	-
		Color	Width	Runway Width
	WH	White	10	10"
	BK	Black	12	12"
	GR	Grey	18	18"
			24	24"

Included

- (1) Mounting Plate
- (1) Hardware Kit
 - (4) J-Bolts
 - (4) 5/16"-18 Split Washer
 - (4) 5/16"-18 Nut

SPECIFICATIONS

Description	Rack to Runway Mounting Plate with J-Bolts		
Use	Indoor Use Only		
Available Sizes	• Runway Width:	10"	12" / 18" / 24"
Material	1/4" Steel Plate		
Construction	Machined Steel Plate		
Finish	Powder Coated Paint		